

# ADITYA WELDTECH

Tensile Membrane Structure Manufacturer





**ADITYA  
WEDTECH**

## Architectural STRUCTURES

Textile construction as a component of modern architecture is accepted increasingly all over the world. A very advanced and high tech type of technical textile is used for textile architecture. Strict European and international regulations define the production process and technical characteristics of each type of technical textile.

The team consists of highly qualified professional and dedicated members with more than 10 years of experience Handling Tensile membrane structures. The design team has members who have been educated and trained in Europe and have Worked on both Simple small structure and also large complicated structures. The detailing team has members who have worked on projects of varying compilations and producing drawings which are easy to read and understand paying attention to detail. The fabrication team has members who have vast experience in handling membrane and take utmost care to ensure precision and excellent quality of work. The installation team has members who are capable of installing membrane structures of any size at any height with great control and planning ensuring a totally wrinkle-free ideally pre-stressed tensile structure.

### Undertaking:

The company has adopted a high-quality Policy wherein quality checks are conducted at every stage to ensure a final output which is elegant, wrinkle free safe, durable, visually pleasing and acceptable to both the client and architect.

### Stages:

A successful tensile structure consists of the following stages:

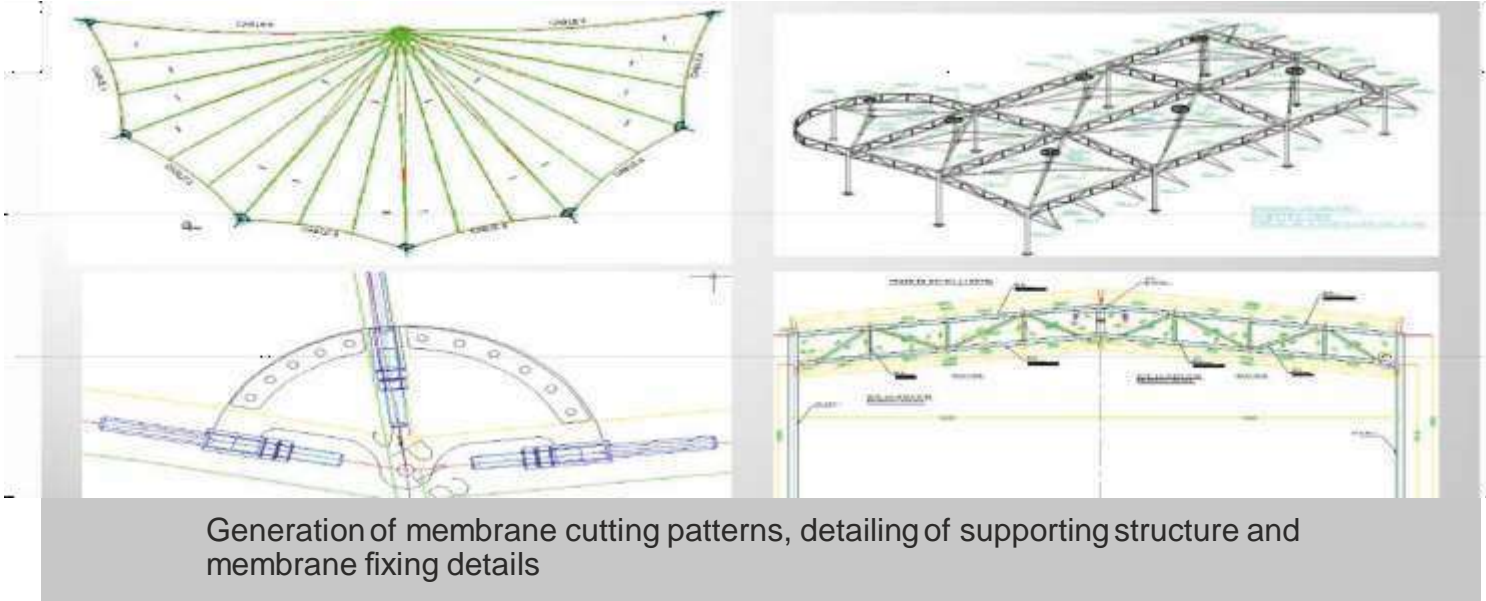
- Concept and visualization
- Analysis of tensile structure
- Design of the supporting structure
- Generation of membrane cutting Patterns, detailing of supporting structure and
- membrane fixing details
- Installation and finishing of the tensile membrane structure
- Handover of the tensile membrane structure
- Maintenance of the tensile membrane structure





## ANALYSIS AND DESIGN

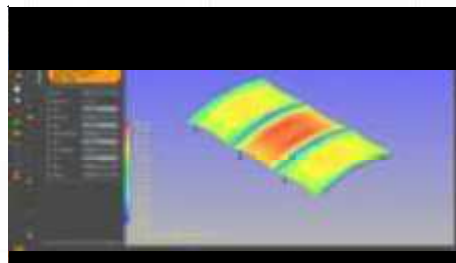
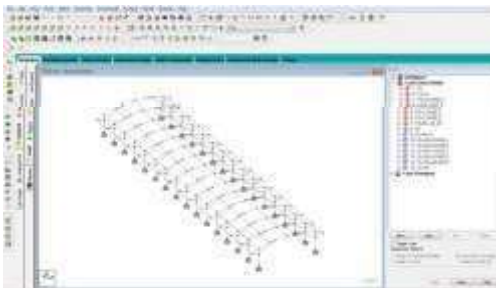
FROTEN 4000 (NON LINEAR TENSILE STRUCTURE DESIGN SOFTWARE)  
STAAD PRO V8i (STEEL STRUCTURE ANALYSIS)



Generation of membrane cutting patterns, detailing of supporting structure and membrane fixing details

## SOFTWARES

Staad Pro - V8i - Steel Structure  
Designing Software  
IxForten 4000 - Specialized Tensile  
Structure Designing Software



# Membrane Cutting Machine



Membrane Material Cutting Machine



Cutting for PVC membrane structure with large format and high speed

## Projects Done By Aditya Weltech

- Nyati Group, Pune
- Goel Ganga Group, Pune
- Shardha Group, Pune
- Tanisha Associated Alandi
- J.R. Group Mumbai
- Latigrace Pvt. Ltd. Ahmadabad
- Atria Mall Worli Mumbai
- IGW P.V.T Ltd. Alandi
- Hira Developers, Pune
- Hiraoka Builders, Mumbai
- Masterline Oil Company, Jalgaon
- Rajendra Suri Trading Company, Sangali
- Anant Agriculture Research and Training Inc. Ahmadabad
- National Railway Academy Vadodara
- Govardhani Construction Mumbai
- WclP.V.T Ltd. Nagpur



● Ghulenagar, Manjri Mundawa Road, Manjri Bk, Pune-07  
● Somnath Borude ,9604703561, 7276943561  
● [info@adityaweldtech.com](mailto:info@adityaweldtech.com)  
● [borude74@gmail.com](mailto:borude74@gmail.com)  
● [www.adityaweldtech.com](http://www.adityaweldtech.com)